

Woodenbong Central School

& Community Newsletter

Principal: Dr Greg Wilson
Unumgar St, Woodenbong

Phone: 02 66 351 281 - Fax: 02 66 351 488
E-Mail: woodenbong-school@det.nsw.edu.au

Readers: This newsletter is supplied free with the help of the advertisers. Please support them.



2nd May, 2019

Week 1, Term 2

Mon	Tue	Wed	Thu	Fri	Sat	Sun
		1	2	3 Primary Cross Country	4	5 Woodenbong Show
6	7 Year 11 & 12 First Aid Course Year 5/6, 9 and 10 History Excursion to Kyogle Museum	8 Secondary Cross Country	9 Primary Captains GRIP Excursion <i>Urbenville Australia's Biggest Morning Tea</i> Open's Northern Rivers Zone Touch Football	10 Primary PSSA District Cross Country at Bonalbo	11 Woodenbong Australia's Biggest Morning Tea	12
13	14 SCU visit to WCS Year 8 Workshop	15	16	17 Secondary Northern Rivers Zone Cross Country at Lismore	18	19
	NAPLAN				Bike Weekend	
20 Opens North Coast Regional Touch Football Trials at Tweed Heads	21	22	23	24	25	26
27	28	29	30	31 Primary PSSA Northern Rivers Zone Cross Country		
Year 7 to 10 Half Yearly Exams						

Principal's Report



Welcome back to Woodenbong Central School for Term 2. I hope everyone had a relaxing enjoyable holiday.

At the end of last Term we held our ANZAC assembly. I thank all the members of our local Community who attended our assembly. Community is an important component of our ANZAC assembly. It provides a forum for our students to participate in a formal assembly to honour those who have served our Country in wars and arenas of conflict. Our Captains, supported by other students, did an excellent job. The primary choir performance was enjoyed and appreciated by those in attendance. The essence of ANZAC was summed up with speech by Jemimah Williams and Cheyanne Cockram, in particular the end where they spoke in language, respectively: Githabul and Maori.

Over the holidays our students participated the ANZAC services of our local villages. Those students representing the school did with distinction. Feedback from those in attendance has been very positive, commenting on the excellent job of our students.



Recently we have been told that the building on our Agricultural Farm known to many as the Old Koreelah classroom is set to be demolished on May 20. As previously mentioned in newsletters the building was severely damaged by termites and is beyond repair. It is sad to see the building demolished, however we must ensure the safety of our students, staff and visitors.

Opportunities allow our students to find out what they like and what might constitute future employment and career path. We also assist our students develop their talents through persistence, hard work and the development of a growth mindset. We believe that *our students deserve to live empowered lives with passion.*

At Woodenbong Central School we continuing to explore using a Restorative Framework in our classrooms and across the school. We would like to operate with all members of our community. That where we have high expectations with appropriate levels of support to help everyone meet the expectations. Support will vary depending on the level of



need. Support can look different for different people. In this approach one size does not fit all.



Next week we will be a focus group for DoE's Information Technology Directorate. The group will be at the school as part of the Digital Schools Strategy. They are looking at the present and future digital needs of schools to support student learning. They will present concepts and ideas (how it could look in schools) to



small groups of students, staff and parents present concepts. The dates that the group will be here have changed to the 8th and 9th May. If you would like to be in the parent focus group please let the office know.

There have been changes to Year 11 assessment tasks. In year 11 students will now have a maximum of 3 formal assessment tasks. Only one of these tasks can be a formal “HSC style” examination. For most subjects this will be their end of Preliminary HSC examination in Term 3. For most subject the half yearly examination does not count as a formal assessment item. However as it prepares students for their HSC examination next year most subjects are still running a half yearly examination. In their HSC year they can have a maximum of 4 assessment tasks.

It is important that our office has up to date contact numbers for parents. These numbers are crucial especially in times of an emergency. We understand that from time to time parents need to change their phone numbers we would ask that you let the school know of any changes to contact details.



Woodenbong Central School 2018 - 2020

Engage in Learning

***High Quality Learning
Environments***

Deep Learning



Coming up this Term....

4th and 5th June—Central School Regional Touch Football at Inverell

4th June—Life Education Van/Healthy Harold

6th June—Secondary English—Romeo and Juliet Excursion

6th to 9th June—Year 12 Geography Excursion to Sydney

13th June—Year 10 Immunisation

17th and 18th June—Central School Regional Rugby League 7's and Netball at Inverell

21st June—Primary and Secondary North Coast Regional Cross Country at Nana Glen

28th June—Secondary Northern Rivers Athletics Carnival at Lismore

Reflection For The Week

THINK UNSELFISHLY. GIVE ANONYMOUSLY

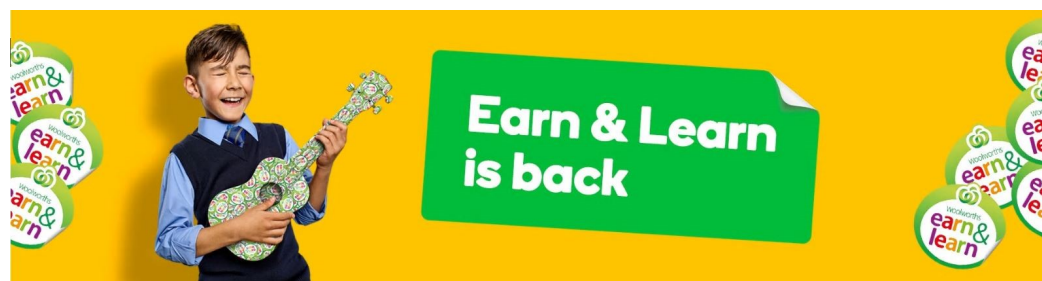
Paul writes: 'Don't be selfish; don't live to make a good impression on others. Be humble, thinking of others as better than yourself. Don't just think about your own affairs, but be interested in others, too, and in what they are doing. Your attitude should be the kind that was shown us by Jesus.' ([Philippians 2:3-5](#) TLB) Becoming more unselfish begins with the decision to stop thinking about yourself so much and start looking for ways to help others. If you want to become more Christlike and unselfish, start doing these two things:

- 1) *Put yourself in situations where people have needs.* Is that risky? Sure. You risk rejection. You risk being misunderstood. You risk making mistakes. But becoming unselfish requires putting yourself in a position where you can see a person's need and do something about it. In other words, get involved!
- 2) *Give quietly or anonymously.* Jesus said: 'Don't do your good deeds publicly, to be admired by others, for you will lose the reward from your Father in Heaven... Give your gifts in private, and your Father, who sees everything, will reward you.' ([Matthew 6:1-4 NLT](#)) It's easier to give when you receive recognition than when no one knows about it. But those who give for recognition and applause have already received any reward they will get (see [Matthew 6:2](#)). There are spiritual, mental and emotional benefits that come to those who give anonymously. Try it. The fulfilment you'll receive will encourage you to make it a lifestyle.

"Provided for you by the local Catholic, Seventh Day Adventist, Presbyterian, Uniting, Anglican, Crossroads Ministries & Muli Muli Full Gospel Outreach Churches".

Woodenbong Central School is taking part in the Woolworths Earn and Learn again this year. When shopping at Woolworths please collect your stickers and bring them into the school.

Thanks You



PRIMARY CROSS COUNTRIES

School – 3rd May (1st Friday Back)

District at Bonalbo – Week 2 – 10th
May

Northern Rivers Zone
at Corndale – 31st May



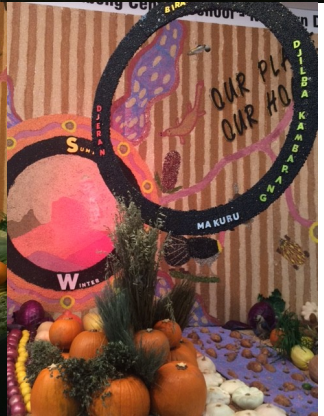
SECONDARY CROSS COUNTRIES

School – 8th May

Northern Rivers Zone at
Lismore 17th May

North Coast Regional at
Nan Glen 21st June

ROYAL EASTER SHOW EXHIBIT



YEAR 10/11 SNOW TRIP EXCURSION

The Jindabyne Excursion is going to be from Sunday 21st to Saturday 26th July, 2019 (first week of term 3).

It would be a good idea if parents start to make payments/start a payment plan.

All monies for this excursion needs to be paid by 13th June.

Thank you



WOODENBONG P&C

YEAR 10/11 SNOW TRIP FUNDRAISER

Raffle

Pair of Spurs plus \$50.00 Horseland Gift Voucher

\$2.00 per ticket

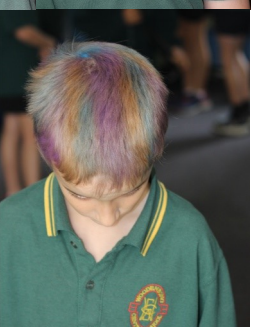
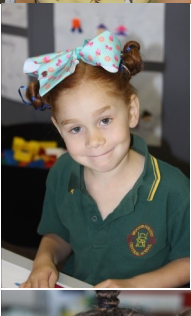
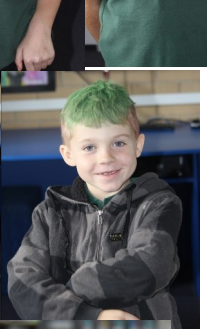
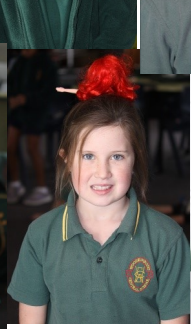
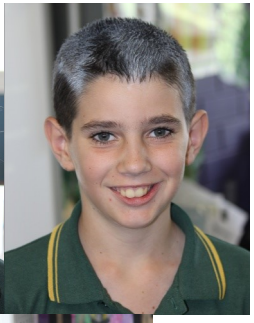
Drawn at
Woodenbong Show
5th May, 2019



Woodenbong Bike Weekend
18th and 19th May, 2019



CRAZY HAIR



DAY

WOODENBONG 28TH ANNUAL SHOW

Admission:

Adults \$10.00
School Student \$5.00
Age pensioners \$5.00
Family \$25.00



BBO
SATURDAY AND SUNDAY
STARTING AT 3:00 PM
SATURDAY

Saturday and Sunday
BBQ Food and bar

Sunday Devonshire Tea, Coffee
and Tea along with BBQ
and Bar

Young Farmers Challenge

12 to 17 Years
and
18 to 35 Years

TEAMS FOR 4
WITH AT LEAST
1 FEMALE

KIDS
GAMES AND
ATTRACTIONS
ANIMAL NURSERY
STALLS

Kids Dog and Pet Show

Kids bring you pets to the show
and put them in the animal
nursery.

They could be big, small, unusual,
cute, ugly, clever, best
dressed, etc



Heifer Bonanza

Saturday 4th May
Judging starts at 3:00 pm

HELICOPTER JOY RIDES

\$75 per Adult
\$60 per child 12 years and
under
(Children 4 years and younger
need to be accompanied by
an adult)



Horse Jumping
CATTLE SHOWING AND JUDGING
Led Steer Competition
Horse Events
Dogs NSW
Championship Show
GRAND PARADE
AND LOTS
MORE...

Sunday 5th May 2019

WOODENBONG SHOW NEWS

Coming to the Show



JOY FLIGHTS

\$75 OF ADULTS

\$60 FOR KIDS UNDER 12
(CHILDREN UNDER 4 NEED TO BE
ACCOMPANIED BY AN ADULT)
Weather permitting

Show Raffle

2 x meat trays
\$2.00 per ticket

ANIMAL NURSERY

Animal Nursery is needing
animals.

If you can help please see
Sallyann Scarlett



KITCHEN

Volunteers needed for to work in the kitchen

**If you are available please call Lowell Steffen on 0407 401 962 or
07 4666 5170**

He will organise a roster if he has enough volunteers.

**Needed—Donations of cakes, slices, etc
for kitchen.**

NEXT SHOW MEETING

18th May, 2019

7:00 pm

Woodenbong Central School
Community Room

Young Farmers Challenge

Start thinking about your team!!

- ◇ 5 to 11 years old
- ◇ 12 to 17 years old
- ◇ 18 to 35 years old

4 to a team (at least 1 female in each team)



HEIFER BONANZA

Saturday 4th May

Cattle on grounds at 2:00 pm

Judging at 3:00 pm

**Register your
teams now!!
See Tien**

URBENVILLE BOWLING CLUB

CHARITY
★★ BOWLS DAY ★★

Saturday 11th May 2019

**\$10 per person
to play bowls**

NAMES IN BY 12:30
FOR A 1PM START

**BBQ LUNCH
AND SAUSAGE
SIZZLE**

FOR MORE INFO PHONE
URBENVILLE BOWLO ON
(02) 6634 1269

RAFFLES & AUCTIONS

3 LOCAL GIRLS ARE PLAYING

**FUTSAL
IN BRAZIL
ON THE AUSTRALIAN U15'S
GIRLS TEAM**

*Come and have some fun at the
Bowlo and help make this once
in a lifetime opportunity one,
these girls won't forget!!*

PAVILION ENTRIES FOR THE SHOW.

Woodenbong Show is on this Sunday 5th May 2019. Please bring your pavilion entries in to the pavilion anytime between 10am and 3pm on Saturday 4th. Cost is only 50 cents per item. Great prizes to be won. If everyone in town entered only one item each we would have a fantastic display. Every little bit helps.

This year we are having a SPECIAL DISPLAY of **Vintage clothing** we will be displaying any clothing prior to 1980. Have a look in your cupboards. Please bring items in on the Saturday. A label with a name & description would be great.

*it's not too late to donate a prize- up to the value of \$20

* if you want to help out over the weekend we do need lots of people to help take entries-write on cards and effectively display the items (Both days)

*If you have any questions contact Chris Reid-
Chief Steward- Pavilion- 66351216

Chaplain's

O

19 members of the WCS primary choir sang a song called "The Anzac" at the Anzac Service held in the Woodenbong Public Hall last Thursday.

r

The children were from Kindy through to year 6 and were dressed in their school uniforms, all looking their very best! They presented the item respectfully and sang it beautifully! With no amplification, I was surprised at the volume with which the children sang. I congratulate each choir member involved in that great effort and also the mums and dads who dressed them so beautifully and brought them along. Well done!

n

The children all received a Golden Rule Award at their school assembly to acknowledge their contribution and to encourage them to keep singing!

e

Take care
Gail Watson

r



Australia's Biggest Morning Tea

URBENVILLE THURSDAY 9TH MAY AT THE URBENVILLE BOWLING CLUB 9:30 TO 11:00 AM

WOODENBONG SATURDAY 11TH MAY AT WOODENBONG PUBLIC HALL SUPPER ROOM.
COMMENCING AT 9:00 AM.
MORNING TEA AND LUNCH AVAILABLE. RAFFLES BEING DRAWN FROM 1:00 PM. FIRST PRIZE IS A QUILT KINDLY DONATED BY JOAN REID.



You are invited to attend a
Free Information session
on Low Vision services

When: 10:30am to 12 noon Wednesday 15 May 2019
Where: Woodenbong Hall, 21 Unumgar Street
Speakers: Judith Hannan, Community Nurse
Jeremy Hill, North Coast Team Manager,
Guide Dogs NSW/ACT

Help for you or someone you know who has difficulty with:

- low vision
- reading the newspaper
- watching TV
- reading price tags
- travelling confidently



For enquiries or to reserve your place,
please call Kym on (02) 6691 8500.
Morning tea provided.



WINNERS OF THE YEAR 10/11 EASTER RAFFLE

1ST STEWART GRIMMETT
2ND TORNELL WILLIAMS
3RD JANE MILNE
4TH PAUL MCERLEAN





Kids Bat and Ball Fitness

Thursdays starting Term 2 if I can get numbers.

3:30 at the oval

Touch Footy, Baseball, Cricket, Soccer Fundamentals and Fitness

Travis 0414 736 422

WOODENBONG TENNIS COMPETITION

Starts back next term

2 person teams. Quick Tennis

Contact Travis 0414 736 422

Will start 2nd or 3rd week depending on numbers



URBENVILLE BOWLING CLUB

SOCIAL BOWLS



SATURDAY 18TH MAY

NAMES BY 12.30PM

PLAY STARTS AT 1PM

17638 Clarence Way
Urbenville, NSW, 2475
Phone: 0266341269

HIGH COUNTRY MEDICAL PRACTICE

FREE VACCINATION

AVAILABLE FOR THE FOLLOWING GROUPS IN 2019

- Pregnant women
- People aged 65 years and over
- All Aboriginal and Torres Strait Islander people aged 6 months and over
- People aged 6 months and over with medical conditions predisposing them to severe influenza.

Vaccines are now available at this practice. Please ring for an appointment on 6634 1275.

Lynda's Pit Stop Café

PIAZZA DORO COFFEE

34 Unumgar St, Woodenbong

Open Wednesday to Sunday, 8am-3.30pm

Divine range of home made foods including pies, cheese cakes, cakes & other delights.

Fish & Chips, Hamburgers, Hot Chips & More

All food & drink available to take away or eat in

Phone Orders: 02 66 351 104

The Stop for The Three Day Weekend

Temporary Australians
Motorbike Friendly Pubs & Places Australia
Creek to Coast

Open 7 Days

Specialist in Group Catering

Genuine Hospitality by your Hosts Tony & Melissa
*House-made Pizzas *Country Style Accommodation
*Bistro (Full Menu, International Cuisine)

Woodenbong Hotel

thewoodenbonghotel@gmail.com Tel: 02-6635 1275



KILLARNEY CO-OP

Ivy St, KILLARNEY Ph:0746641188 killarneycoop.com



Serving the Community Since 1922

Ideal Stud No. 126

Estd. 1965
1166 Boomi Creek road
Woodenbong NSW 2476

Tel: (02) 6635 1327
kellevsen@yahoo.com

Bulls and females for sale



WOODENBONG & DISTRICT GOLF CLUB LTD

Golf Links Road, Woodenbong 2476

Visitors Welcome

Kitchen Open: Friday 5.30pm

Sunday 12-2pm

'Best Little Golf Club on the North Coast'

Phone/Fax 66 351 278

Opening Times

Wed - 4pm

Fri - 4pm

Sat - 3pm

Sun - 11am

Fri Night Raffles & Members Draw



VISION RADIO NETWORK



Always Here for You!

Connecting Faith to Life

Why not tune in today!!

Woodenbong 87.6 FM



Giving Back to the Community

Ph. W'Bong 02 66 351 199
Kyogle 02 66 323 544
Mob: 0488 277 232

Licensed Real Estate, Stock & Station & Business Agent

Selling Kyogle, Woodenbong, Urbenville & Bonalbo Districts

www.nrrealty.com.au

Vanessa Wernowski
Licensee/Principal
36 MacPherson St,
Woodenbong, 2476



ROD & KIM WATSON
PROPRIETORS



25-27 UNUMGAR STREET
WOODENBONG NSW 2476

Mobile 0427 351 300
www.rodwatson.com.au
woodenbongdriveway@gmail.com

ALL CALLS 02 6635 1300

SERVICE STATION • NRMA SERVICE • NEWSAGENCY



Woodenbong Progress Association

Meetings held the first Tuesday of the month

Woodenbong Golf Club

WINTER: 7.00PM - SUMMER: 7.30PM

Everyone Welcome



FOODWORKS



Ph: 6635 1310

*Groceries * Fresh Fruit & Veg * Fresh Bread

Weekly Specials

*EFTPOS *Open Mon-Fri 8am - 6pm Sat. 8am - 5pm

Sun 8am - 4pm