

Woodenbong Central School

& Community Newsletter

Principal: Dr Greg Wilson
Unumgar St, Woodenbong

Phone: 02 66 351 281 - Fax: 02 66 351 488
E-Mail: woodenbong-school@det.nsw.edu.au

Readers: This newsletter is supplied free with the help of the advertisers. Please support them.



6th June, 2019

Week 6 Term 2

Mon	Tue	Wed	Thu	Fri	Sat	Sun
					1	2
		5	6 Secondary English Romeo & Juliet Excursion	7 Girl's League Tag at Casino	8	9
			Year 12 Geography Excursion to Sydney			
10	11 Year 5/6 Debating at Wyrallah Road Public School P&C Meeting 4:00 pm Defence Force Recruiting Team Visit to WCS	12 Secondary Athletics Carnival	13 Year 10 Immunisations Primary Rugby League Day	14	15	16
17 Under 16's Boys Rugby League 7's at Inverell	18 Under 13's and Opens Boys Rugby League 7's and Open Girls Netball at Inverell	19	20	21 North Coast Regional Cross Country at Nana Glen	22	23
24	25	26	27	28 Secondary Northern Rivers Zone Athletics Carnival at Lismore	29	30

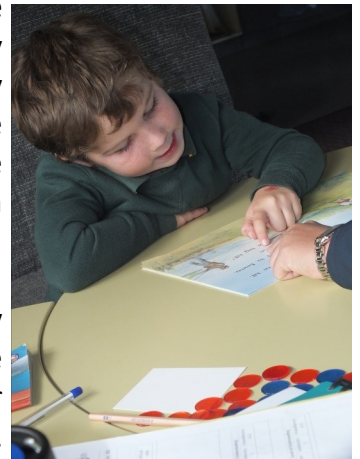
Principal's Report



Opportunities allow our students to find out what they like and what might constitute future employment and career path. We also assist our students develop their talents through persistence, hard work and the development of a growth mindset. We believe that our students deserve to live empowered lives with passion.

This week highlights the range of opportunities our students have at their fingertips. Our touch football and 7s rugby league teams travelled to Inverell for first rounds of the Central Schools' knockout competitions, our students travelled to Brisbane for to watch a stage production of Romeo and Juliet, students competed in the league tag competition, other students went to on an excursion to Amberley RAAF base and our Year 12 geography class travelled to Sydney as part of their Geography course.

Our Year 12 students will soon be sitting their HSC examinations. This year the nature of the HSC examination has changed. NESA (some may know they by their former name the Board of Studies) has not and will not release any specimen examination papers. NESA has release some old questions that are consistent with the new course and have said they will release some more sample questions. To help our students our teachers are using their profession associations to help prepare our Year 12 for their upcoming HSC examinations.



The issues our students experienced with NAPLAN online were experienced by a wide range of schools both within NSW and across Australia. For the students at Woodenbong we experienced drop outs. These were worst for during the students' writing examination. The students did receive extra time. However, this is issue must not arise for any student in the future. NAPLAN is run by ACARA, a Federal Government body. ACARA is still investigating these issues and hopefully they are resolved before 2020. 2020 is the year that online NAPLAN is mandatory for all students in Years 3, 5, 7 and 9.



Fortunately the planned power outage in Woodenbong from Essential Energy occurred on Wednesday and not on the Tuesday. Even though we organised for a generator to provide power to our server, computers in the front office and our till we had no power for heating.

Congratulations to all our teams who competed in Inverell on Tuesday and Wednesday. At the time of writing our U16 Girls touch football had made it on to Dubbo.

The staff, students and wider community of Woodenbong Central School continues towards making Woodenbong Central School a safe place for all. Woodenbong Central School has anti-bullying policy and procedures. A copy of these are available on the school website or via the front office upon request. The policy outlines how we define bullying and how we school responds to incidents of bullying. The policy is also on the school website <http://www.woodenbong-c.schools.nsw.edu.au/our-school/rules-policies> . There are many forms of bullying. However,

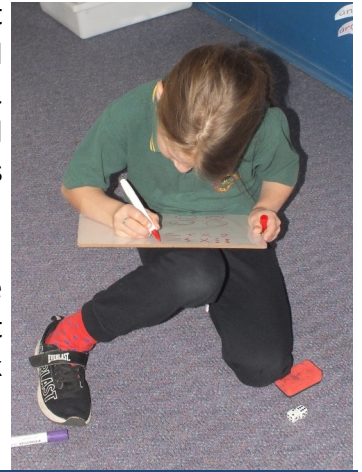




bullying involves the inappropriate use of power, an intention to harm and it is repeated. Bullying is not acceptable behaviour at Woodenbong Central School. By working together we can minimise such incidents at the school. If as a parent you are concerned about incidents at school you should contact Stewart Grimmert and Doug Gardiner Years 7, 8 & 9 and Years 10, 11 & 12 respectively for incidents in high school and Anne Marie Mason or Christine Reid for incidents

in primary

It is important that our office has up to date contact numbers for parents. These numbers are crucial especially in times of an emergency. We understand that from time to time parents need to change their phone numbers we would ask that you let the school know of any changes to contact details.



Woodenbong Central School 2018 - 2020

Engage in Learning

High Quality Learning Environments

Deep Learning



MISSING

Jumper

Blue NSW Touch Football

Has Jack Thompson name on it

Please return to Jack or Front Office

SHOW NEWS

Next Show Meeting

Tuesday 25th June

7:00 pm

Woodenbong Central School

Community Room

Coming up this Term....

1st to 5th July—NAIDOC Week

Coming up Next Term....

21st to 27th July—Year 10 /11 Snow Trip

26th July—Primary Athletics Carnival

30th July—Byron Bay Writer's Festival

1st August—Australian Mathematics Competition

22n August—Primary PSSA Northern Rivers Zone
Athletics Carnival

YEAR 11 FOOD TECHNOLOGY



Year 11 Food
Technology Mystery
Ingredient Challenge.

Puff pastry, chicken,
potato, lemon, chick
peas.

Shaun Hoffman made
and "Chicken Pillow"



Chaplain's O r n e r

I was recently told about two little children physically fighting, a situation which shocked those present. The ensuing conversation was around the need for children to be taught how to use their words instead of their fists. What a powerful and effective life skill we give our children when we teach them good communication skills from an early age.

There are many courses available for those who need help in this area and also lots of good information online. Learning these skills can release us from feeling powerless and frustrated in conflict situations and will lead to better, healthier relationships.

Take care
Gail Watson

Primary

Week 4,
Term 2

>>> IMPORTANT DATES <<<

LIVE! - Year 5/6 debating - Wajantan Road
21st June - Regional Cross Country - Nana Glen

What's happening?

Students from K-6 participated in Personal Development and Health activities inside the Life Education Van on Tuesday. This is an enjoyable and educational experience that students across Australian schools are provided. Thank you to those who have already paid. If you haven't yet, please make sure that you do so we ensure that the program continues into the future for all.



Year 2 students showing off their beautiful '4 Seasons' artwork.

CARING FUN THOUGHTFUL

Kindness is Cool

Award recipient:

Zane Bennett

Zane was awarded the captain's Kindness is cool award for Week 4. Congratulations Zane, the captains have recognized that you are always putting others before yourself! ☺



Week 4 fortnightly class awards

K/1: May-May, Mar-Mar, Millie, Harry

Year 2: Olivia, Liam, Jessica, Arliya

Year 5/6: Sharlynn, Tyrone, Gus, Steph

Win-bin winners: May-May, Jack B.

Best working Class: Yr 2

Last Fortnight's Social Skill: **Raising others - Winner - Year 5/6**

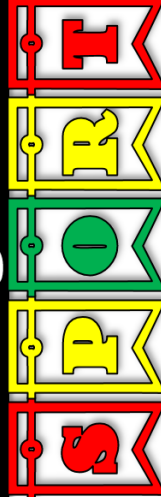
This fortnight's social skill focus: **Getting along with others**

Classroom Bronze Award Recipients



Week 6,
Term 2

Primary



Sports Award

Award recipient:

Stella Dau

Well done Stella for receiving the Captain's Sports Award for Week 4. The Captains appreciate how Stella always shows outstanding sportsmanship. ☺



Congratulations to all 17 WCS Primary students who competed at the Northern Rivers Zone PSSA Cross Country Carnival last Friday at Corrallee. I was extremely proud of all our students, regardless of their position in the race, due to their effort, behaviour and sportsmanship. Congrats to Zane, whose goal was to make it to zone - and he did (6th)! Congrats to Arliya who arrived in the nick of time and ran a solid race (28th). Congrats to Hank who wanted to beat his place from last year and did (26th). Congrats to Cassidy who suffered an injury but still finished the whole 3km. Congrats to Stella and Hugh who both finished in the top 20 (16th and 17th respectively). Each race consisted of around 80 athletes, possibly up to 100! Congratulations to Sharlynn(6th), Elise(27th), Jordan(46), Charlie(64), Nick(56), Keziah(49), Georgie(51), Archie who all put in a fantastic level of effort in their races - or enjoyed a "Sunday" stroll ☺. HUGE congratulations to **Isla, Beau and Clay** who will now be competing at the North Coast Regional PSSA cross country carnival in Nana Glen on the 21st June. Isla shot out of the starting lane and took the lead early. She some how managed to keep that lead for the entire race and won her event! Beau ran an impressive race, keeping the 5th position nice and warm for the entire race... until the finish line where he used his sprinting skills to his advantage and took 3rd!! Clay's secret weapon was the hills. Clay sat at the back of the front pack until he hit the hills and then he sailed into first place and kept it quite comfortably to the end!! Well done you three and good luck!



Isla, Elsie and Arliya



Archie, Hugh and Beau



Beau, Archie & Jahdon



Stella



Cassidy, Georgia & Kezia



CLAY



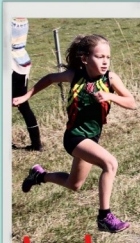
NICHOLAS



CHARLIE



Beau



Isla

Primary Northern Rivers Zone
Cross Country Carnival



SHARLYNN & STELLA



Hank, Nich & Zane



Elsie & Arliya



Beau & Archie



Hank



sharlynn



HUGH



Jahdon



Archie and Beau



Stella



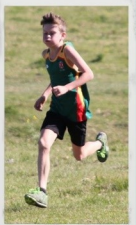
Charlie



Hugh



ZONE



Clay



Cassidy



Arliya



Beau



CLAY



Isla



Stella

at Corndale
NSW



Elsie

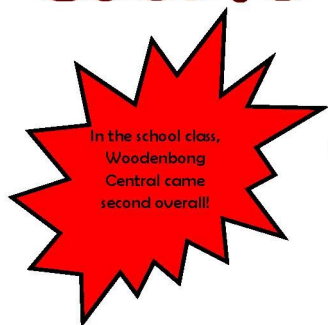


Clay & Isla



BEAU

Casino Beef Week Results 2019



Saturday Hoof Results

Heavy Class Limousin (school) 5th—\$100

Light Class Highly Commended
Bloomfield steer 6th—ribbon

Carcass Hoof Results

Second in Light Class—Bloomfield Hereford

Third in Class 3—Newton steer

Second—School steer (ribbon, no money)



Class	Live Weight	Breed	Vendor	HSCW	p8 Fat	Points (10)	Meat Colour	Points (5)	Rib Fat	Points (15)	EMA	Points (20)	Hump	Ossification	MSA Marbling	pH	MSA Index	Points (100)
104	353	SP X Angus x	Cooke Family and Bayliss	194.2	8	10	1C	5	9	9	75	20.00	60	100	370	5.04	65.94	89.94
103	343	Hereford	Woodenbong Central School	188.8	7	10	4	1	6	15	73	20.00	40	100	350	5.68	62.25	88.25
106	343	Hereford	Samara Leven	171	9	8	4	1	5	15	66	19.74	40	100	150	5.53	61.83	85.57
102	350	Limo X Santa x	Bonalbo Central School	194	7	10	3	2	5	15	65	17.09	55	110	180	5.68	60.91	85.00
101	299	Angus	Kyogle High School	156.4	10	6	2	4	7	13	56	15.42	45	110	340	5.58	63.83	82.28
105	354	Hereford	Amos Leven	179.4	7	10	4	1	3	10	69	20.00	45	100	130	5.68	60.98	81.98

Class	Live Weight	Breed	Vendor	HSCW	P8 Fat	Points (10)	Meat Colour	Points (5)	Rib Fat	Points (15)	EMA	Points (20)	Hump	Ossification	MSA Marbling	pH	MSA Index	Points (100)
217	375	Angus x	Casino High School	203.2	8	10	1C	5	7	15	72	20.00	55	120	360	5.34	62.98	92.98
204	386	Limo/MG x	Ironpot Pastoral	223.6	12	6	1C	5	8	15	83	20.00	50	100	350	5.47	65.5	91.50
202	391	Limo /Mg x	Ironpot Pastoral	227.6	8	10	1C	5	9	13	86	20.00	55	120	350	5.57	63.12	91.12
215	383	Angus x	Perkins G	215.2	12	6	2	4	8	15	74	20.00	50	100	370	5.39	65.84	90.84
211	424	Charo X	Cooke Riley &	241	10	10	2	4	7	15	74	17.90	55	110	270	5.59	62.73	89.63
214	361	Simm x	Murwillumbah High School	191.6	6	10	4	1	6	15	69	19.57	45	100	260	5.62	63.79	89.36
208	408	MG x	Richmond River High School	231.2	10	10	4	1	8	15	86	20.00	50	100	170	5.67	62.57	88.57
207	406	Limousin	Nicholls John	223.4	5	9	1C	5	4	12	89	20.00	55	100	130	5.58	61.22	87.22
201	392	Angus X MG	Kyogle High School	206.6	11	8	1C	5	9	13	63	14.81	45	100	330	5.33	65.32	86.13
209	376	H/ford X Santa	Woodenbong Central School	194	13	4	1C	5	5	15	58	13.13	50	100	370	5.51	65.38	82.51
213	361	Charo x	Murwillumbah High School	198.2	3	5	2	4	4	12	74	20.00	40	100	140	5.47	61.42	82.42
210	408	H/ford X Angus	Woodenbong Central School	218.4	12	6	3	2	6	15	76	20.00	60	130	210	5.59	59.39	82.39
203	379	Limo X MG x	Ironpot Pastoral	225	12	6	2	4	12	7	76	20.00	50	120	330	5.42	63.08	80.08
205	401	MG X Char-	Holy Trinity	250.8	14	2	1C	5	16	0	95	20.00	60	100	160	5.6	63.08	70.08
206	366	Limo X An-	Nicholls MF &	210	7	10	4	1	6	15	77	20.00	55	100	170	6.12	0	46.00
212	362	Charo X Charo x	Lachlan Wallace	204.8	3	5	2	4	4	12	87	20.00	55	100	140	6.73	0	41.00
216	422	Angus x	Casino High School	241	3	5	6	0	6	15	91	20.00	55	100	280	6.47	0	40.00

Class	Live Weight	Breed	Vendor	HSCW	P8 Fat	Points (10)	Meat Colour	Points (5)	Rib Fat	Points (15)	EMA	Points (20)	Hump	Ossification	MSA Marbling	pH	MSA Index	Points (100)
306	432	Limo/Angus x	Ironpot Pastoral	241.6	10	10	1C	5	10	15	78	20.00	75	100	320	5.48	44.53	94.53
310	476	Char X Angus	Nicholls MF & NJ	269.2	9	10	1C	5	10	15	78	17.60	50	110	400	5.38	45.21	92.81
314	435	H/ford X Angus	Woodenbong Central School	243.6	13	10	2	4	7	15	82	20.00	65	120	370	5.31	43.15	92.15
307	470	Hereford X Santa	Humphreys T	259	8	10	1C	5	9	15	76	17.39	70	100	150	5.5	42.06	89.45
311	464	Charo X Baldy	Holy Trinity School	265	6	8	1C	5	6	15	83	20.00	65	130	320	5.54	41.33	89.33
315	455	H/ford/Limo x	Perkins G	252.8	14	8	2	4	9	15	76	17.96	70	130	360	5.43	42.03	86.99
313	451	Angus x	Richmond River High School	261.8	9	10	3	2	7	15	90	20.00	60	120	160	5.52	39.84	86.84
312	483	Limo/Brah X SP	Nicholls John	287.8	6	8	2	4	4	10	105	20.00	70	100	340	5.56	44.47	86.47
305	443	MG X Santa x	Bonalbo Central School	245.6	11	10	3	2	8	15	68	14.09	65	100	340	5.65	45.29	86.38
301	453	Charo X Brah/ H/ford	Simcox BS & TM	254.8	4	5	1C	5	5	13	88	20.00	70	110	280	5.36	42.26	85.26
304	435	H/ford X Simm x	Bonalbo Central School	235.6	7	9	2	4	6	15	63	12.18	60	100	310	5.41	44.55	84.73
308	492	Santa X Hereford	Welbatch Pty Ltd	281	11	10	3	2	8	15	69	11.44	65	130	380	5.64	42.66	81.10
309	479	Char X Angus	Nicholls Mf & NJ	264	15	6	2	4	11	13	74	15.81	55	130	330	5.4	42.11	80.92
302	450	Simm X Simm/H/ford	St Mary's Catholic College	244.6	6	8	5	0	7	15	83	20.00	60	100	300	6.82	0	43.00
303	469	H/ford X Simm x	Bonalbo Central School	252.6	3	3	4	1	5	13	78	19.11	50	120	180	6.3	0	36.11

Class	Live Weight	Breed	Vendor	HSCW	P8 Fat	Points (10)	Meat Colour	Points (5)	Rib Fat	Points (15)	EMA	Points (20)	Hump	Ossification	MSA Marbling	pH	MSA Index	Points (100)
402	596	Limo	Holy Trinity School	350.8	11	9	2	4	8	15	107	20.00	75	130	370	5.58	62.71	90.71
401	588	Limo	Ironpot Pastoral	358.8	16	10	3	2	10	15	108	20.00	70	120	340	5.42	63.3	90.30
405	536	Limo	Nicholls John	301.6	14	10	2	4	10	15	88	20.00	55	150	310	5.49	60.43	89.43
403	548	Santa X Hereford	Humphreys D	294	18	8	2	4	10	15	75	13.65	70	100	380	5.4	66.11	86.76
404	510	Red Angus X Charo	Holy Trinity School	282	8	5	1C	5	12	15	81	18.13	60	130	380	5.56	63.06	86.19
406	522	Limo	Woodenbong Central School	315.2	7	3	2	4	6	11	104	20.00	65	100	330	5.63	64.78	82.78
407	554	Limo x	Casino High School	329	7	3	3	2	6	11	115	20.00	70	100	160	5.59	62	78.00



TRIP EXCURSION
YEAR 10/11 SNOW

The Jindabyne Excursion is going to be from Sunday 21st to Saturday 26th July, 2019 (first week of term 3).

It would be a good idea if parents start to make payments/start a payment plan.



All monies for this excursion needs to be paid by 13th June.

Thank you

Old Bonalbo Public School P&C Annual

FIREWORKS SPECTACULAR

Raffle: 1st prize
1 night stay Ramada Ballina for 2 in a riverview spa room.


Hot Food, Cold drinks, Desserts, Tea/Coffee

Saturday 8th June 2019
Bonalbo Showground
Gates open 5pm
Fireworks 8pm


Chocolate Wheel
Fitzmax, Arum, Repco, Bonalbo pharmacy, Foodworks, and many more!!!

ENTRY
Adults/High School Students \$10
Primary Students \$5

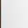
EXTRA CURRICULAR PHOTOS




Woodenborg
Central School




Junior Students - 2019
Georgia Mulder - Teacher Assistant




Woodenborg
Central School




Senior Students - 2019
Bilal Hussain - Teacher Assistant




Woodenborg
Central School



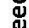
Year 6 - 2019
Micki Murray - Teacher




Woodenborg
Central School



Year 12 Jockets - 2019
Micki Murray - Teacher



Woodenborg
Central School



Year 12 Jockets - 2019
Micki Murray - Teacher

\$10.00 EACH

When ordering payment needs to be made with orders.

ORDERS NEED TO BE IN BY 11TH

Senior Students - 2019
Georgia Mulder - Teacher Assistant

Junior Students - 2019
Bilal Hussain - Teacher Assistant

Year 6 - 2019
Micki Murray - Teacher

Year 12 Jockets - 2019
Micki Murray - Teacher

2019 Extra Curricular Photo Order Form

Student Name:	Cash Enclosed \$		
		Number Ordered	Photo
Junior Leaders 2019			Year 6 Fun
Senior Leaders 2019			Year 12 Jackets (backs)
Year 12 Fun			Year 6
School Leaders 2019			Year 12 Jackets (front)

Woodenbong Central School is taking part in the Woolworths Earn and Learn again this year. When shopping at Woolworths please collect your stickers and bring them into the school.

Thanks You

Lynda's Pit Stop Café

PIAZZA DORO COFFEE

34 Unumgar St, Woodenbong

Open Wednesday to Sunday, 8am-3.30pm

Divine range of home made foods including pies, cheese cakes, cakes & other delights.

Fish & Chips, Hamburgers, Hot Chips & More

All food & drink available to take away or eat in

Phone Orders: 02 66 351 104

The Stop for The Three Day Weekend

Temporary Australians
Motorbike Friendly Pubs & Places Australia
Creek to Coast

Open 7 Days

Specialist in Group Catering

Genuine Hospitality by your Hosts Tony & Melissa
*House-made Pizzas *Country Style Accommodation
*Bistro (Full Menu, International Cuisine)

Woodenbong Hotel

thewoodenbonghotel@gmail.com Tel: 02-6635 1275



co op KILLARNEY CO-OP.

Ivy St, KILLARNEY Ph:0746641188 killarneycoop.com



Serving the Community Since 1922

Ideal Stud No. 126

Estd. 1965
1166 Boomi Creek road
Woodenbong NSW 2476

Tel: (02) 6635 1327
kellevsen@yahoo.com

Bulls and females for sale



MIGHTY HELPFUL
MITRE 10
TAYLORS
HARDWARE & ELECTRICAL RETAILERS

27 MacPherson Street
Woodenbong 2476

Phone: (02) 6635 1294
Fax: (02) 6635 1448

ALEX MARTIN PLUMBING

Alex Martin
Plumber
Email: alexm_864@hotmail.com

Water, Drainage, Gas, Stormwater
Septics, Hot Water Systems
ABN 68929455048 Lic 278503c

Call Today! **0427336984**

WOODENBONG & DISTRICT GOLF CLUB LTD

Golf Links Road, Woodenbong 2476

Visitors Welcome

Kitchen Open: Friday 5.30pm

Sunday 12-2pm

'Best Little Golf Club on the North Coast'

Phone/Fax 66 351 278

Opening Times

Wed - 4pm

Fri - 4pm

Sat - 3pm

Sun - 11am

Fri Night Raffles & Members Draw



VISION
RADIO NETWORK



Always Here for You!

Connecting Faith to Life

Why not tune in today!!

Woodenbong 87.6 FM



YOUR LOCAL PHARMACY

welcomes you with friendly professional services

MONDAY to THURSDAY 9:00 to 5:00 / FRIDAY 9:00 to 6:00

WOODENBONG PHARMACY - Ph 66 351 220 / Fx 66351 221

39 MACPHERSON STREET, WOODENBONG NSW, 2476



ROD & KIM WATSON
PROPRIETORS



25-27 UNUMGAR STREET
WOODENBONG NSW 2476

Mobile 0427 351 300
www.rodwatson.com.au
woodenbongdriveway@gmail.com

ALL CALLS 02 6635 1300

SERVICE STATION • NRMA SERVICE • NEWSAGENCY



Woodenbong Progress Association

Meetings held the first Tuesday of the month

Woodenbong Golf Club

WINTER: 7.00PM - SUMMER: 7.30PM

Everyone Welcome



FOODWORKS



Ph: 6635 1310

*Groceries * Fresh Fruit & Veg * Fresh Bread

Weekly Specials

*EFTPOS *Open Mon-Fri 8am - 6pm Sat. 8am - 5pm

Sun 8am - 4pm